



Advertising Opportunities

lisa.rauliuk@curlingseattle.org
www.curlingseattle.org

1440 N. 128th Street
Seattle, WA 98133

About the Club

Granite Curling Club is a 501 c 3 Non-Profit Organization dedicated to fostering the sport, spirit, and community of curling that is inclusive of everyone.

Our club operates from September through June each season and is host to several bonspiels (tournament competitions), corporate rentals, public learn-to-curl events, private rentals and community events.

Our primary memberships consists of adult leagues, junior leagues, and adaptive curling.

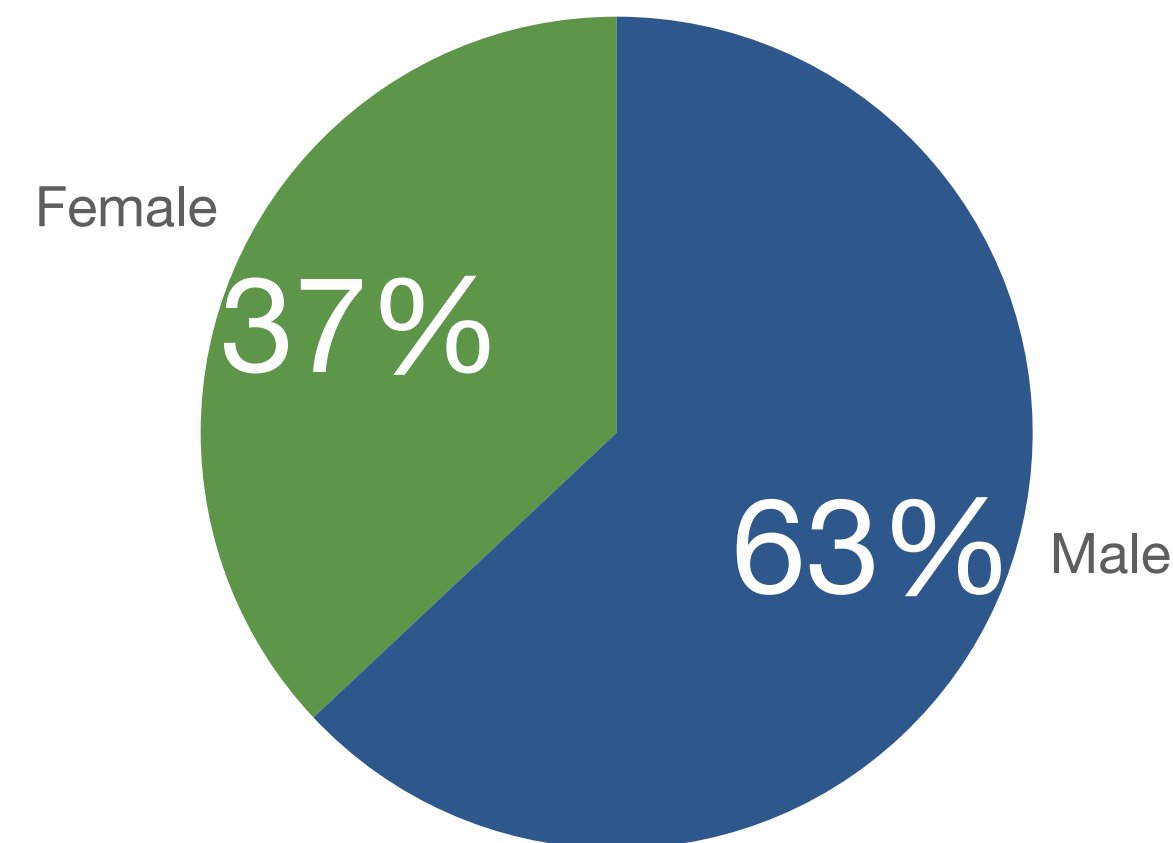
Demographics & Exposure

600 Members

Youth Members: 10%

Average Member Age Range: 30-60

Average Income: \$75k-\$250K



8,000 Rental & Group Event Participants

1,300 Learn-to-Curl Participants

900 Bonspiel Participants

6 Adaptive Curling Sessions

4 Regional Events

All games at GCC are live-streamed and accessible on our [YouTube channel](#)

Events Hosted at Granite Curling Club

2026-2027 Season

Pacific Northwest Curling Association Events:

- Mixed 4's Club Playdowns: February 20-24
- Arena Club Playdowns

National Training Events:

- HotShots Curling Camp November

Bonspiels:

- Kozai Cup: October 3
- Knock the Dust Off: October 17-18
- Holiday Spiel: December 4-6
- 5 & Under: February 27-28
- Open Doubles: March 12-14
- All American: March 20
- April Spiel: April 1- 4
- Junior/Family Fun Day: May 1
- Rainbow Spiel: May 14-16
- Summer Spiel: June 18-20

Advertising Options & Exposure

Granite Curling Club offers three ad placement options:

In-Ice

Arena

Scoreboard

Placement includes listed on our website and on the digital display screens within the club.

All advertising will remain in place for the entire curling season - September through June.

Multi-Year advertising contracts are available at a 5% discount for 2 years and a 10% discount for 3 years.



Advertising Options






In-Ice Ads:

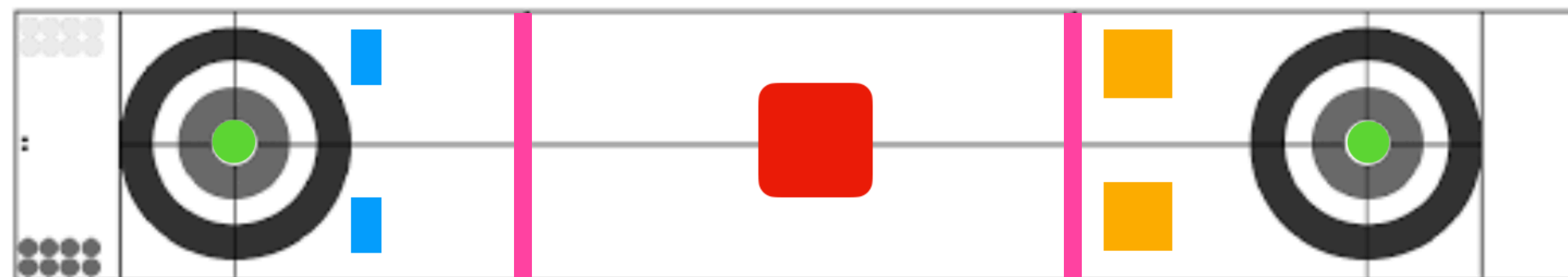
In-ice ads are sold as a single location per sheet, with placement at either end of the sheet, unless otherwise noted below.

In-ice ads are only sold once per year before the ice goes in for the season.

Ad Space & Artwork Deadline: July 20, 2026



	Above the House	Small Ad	54" w x 18" h or 30" circle	\$425
	Before or After the Hogline	Medium Ad	36" w x 36" h or 60" w x 24" h	\$575
	Middle of the Sheet	Large Ad	90" w x 54" h or 120" w x 30" h	\$825
	Hogline	Logo Only: Both Ends	14'5" w x 4" h	\$700
	Button	Ad: Both Houses	12" circle (same art for both houses)	\$300



Advertising Options

Scoreboard Ads:

The club has five Scoreboards available for the full season.

Size: 16"h x 96"w. Pricing includes production costs.

\$1,350 for the full season (Sept-June)

Scoreboards are visible on the live-stream.

Option to renew scoreboard ads will be provided to existing advertisers with a June 30, 2025 deadline. If you are interested in a scoreboard ad, and we are full, you will be placed on the wait list.

Deadline: Artwork due **August 17th** to be in place for the start of the curling season. Scoreboard signs can be installed at any time, provided there is availability.

Artwork Considerations:

A sheet of ice is 150 feet long and 15 feet wide.

For maximum visibility, we recommend a letter size of 6-8".



Advertising Options

Arena Ads:

Posters will be located on the arena sidewalls with visibility from both the upper and lower viewing areas and the bar.

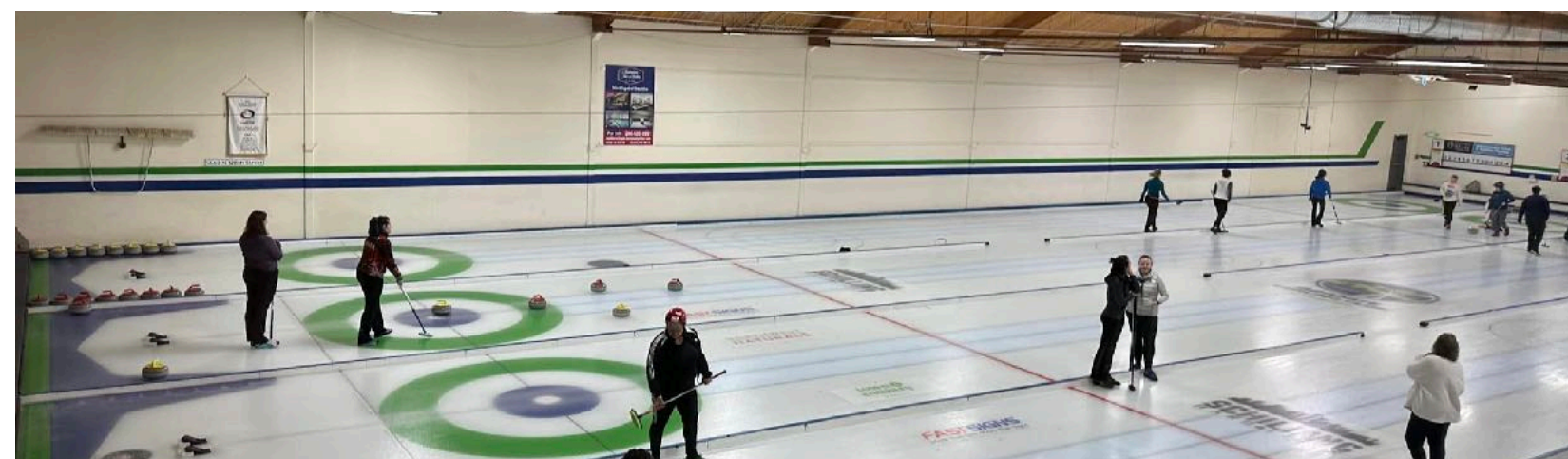
6'h x 4'w - \$1,400/season (September - June)

Deadline: Poster ads can be added at any time during the curling season and rates will be pro-rated.

Artwork Considerations:

The ice arena is very large - 74' 1" wide and 153' 3" long, and the wall height is about 15'. The walls in the arena are an off-white color.

We suggest following the visibility signage chart when designing your ad.



LETTER VISIBILITY CHART

LETTER HEIGHT	MAXIMUM IMPACT	MAXIMUM READABLE
3"	30'	100'
4"	40'	150'
6"	60'	200'
8"	80'	350'

Artwork Requirements

Signage production will be handled by Granite Curling Club and is included in the price of advertising. Design Services are NOT included, but if requested, will be billed at a rate of \$200/hour.

Please provide production ready or vector artwork.

In-Ice Ads:

EPS, PNG, JPG; 300 dpi

Scoreboard Ads:

EPS or vector file

High res PDF

Arena Ads:

EPS or vector file

The club reserves the right to refuse any advertising that is considered offensive or inappropriate.

Artwork Considerations

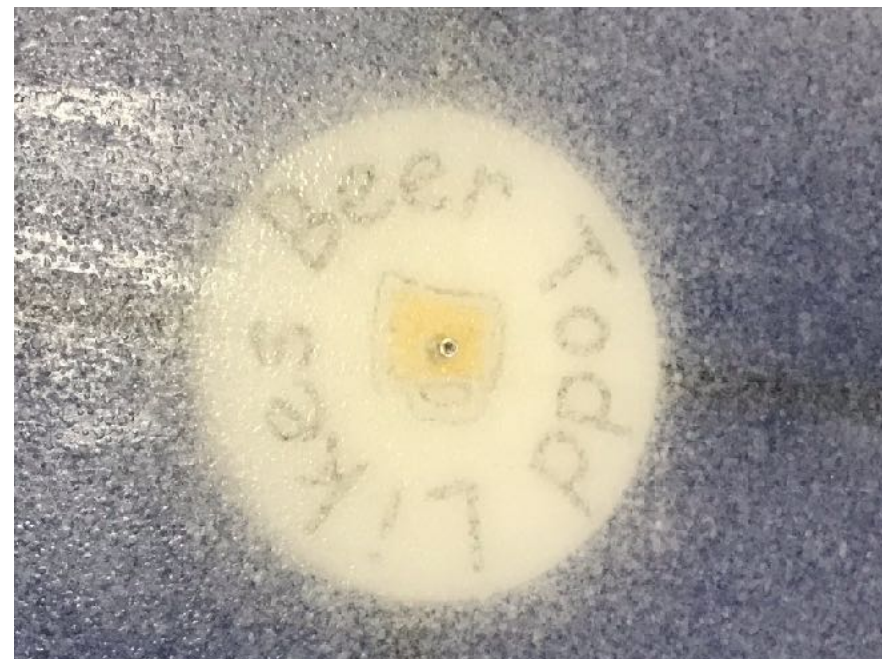
In-Ice logos should have high contrast with the background for best legibility. As the ice is flooded throughout the season, the ad quality may deteriorate based on the design.

Large in-ice ads will appear on the white area of the sheet.

Button ads

- Recommended to have a 1/2" white line stroke around the edge to increase visibility since they are next to a dark blue background.
- Due to their small size, sans serif fonts are more legible than serifs.
- Minimum font size is 1 inch or greater

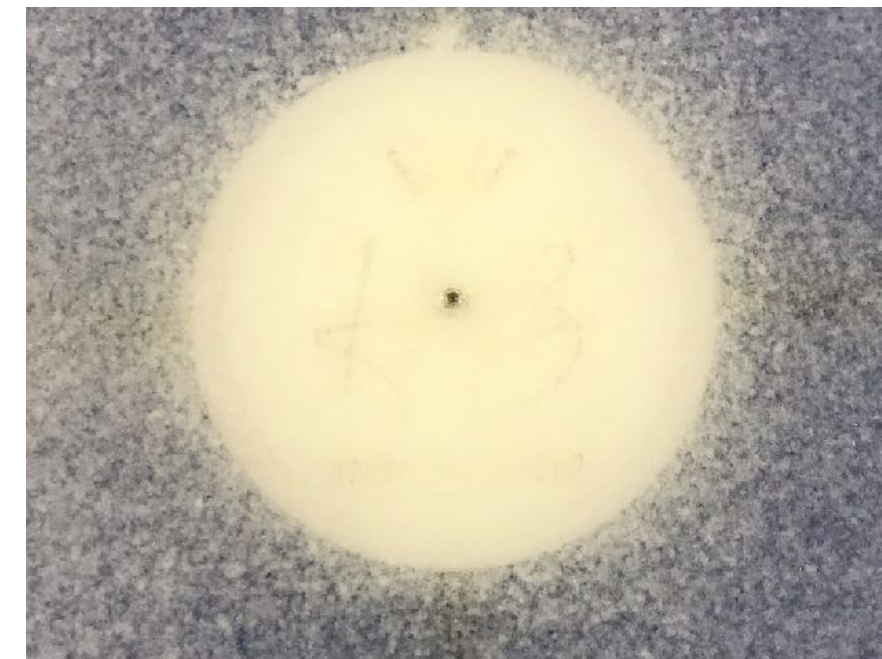
Button Advertising Examples:



Good Legibility



Lost contrast against the dark background



Light colors (gold & white) did not retain visibility



The tiny white circle is the button

Contact Info

To purchase advertising, please e-mail lisa.rauliuk@curlingseattle.org

Your support helps make our club and community possible.

THANK YOU!